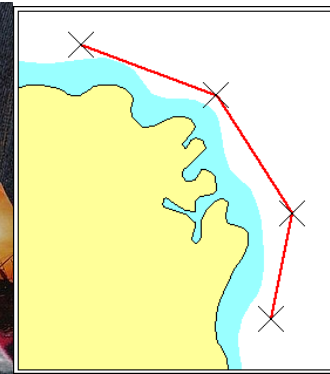
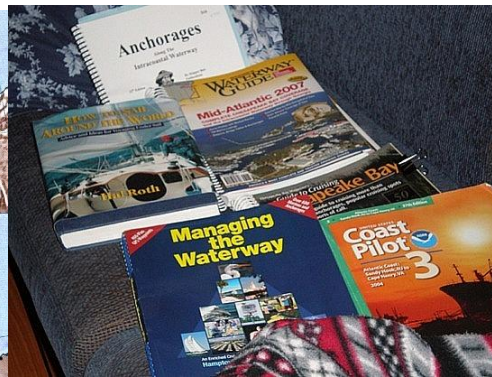


Passage Planning



- *Plan of vessel's voyage start to finish*
- *Leaving the dock and harbour area*
- *En-route portion of voyage*
- *Approaching destination and mooring*
- *ie 'berth to berth' plan*





Passage Planning

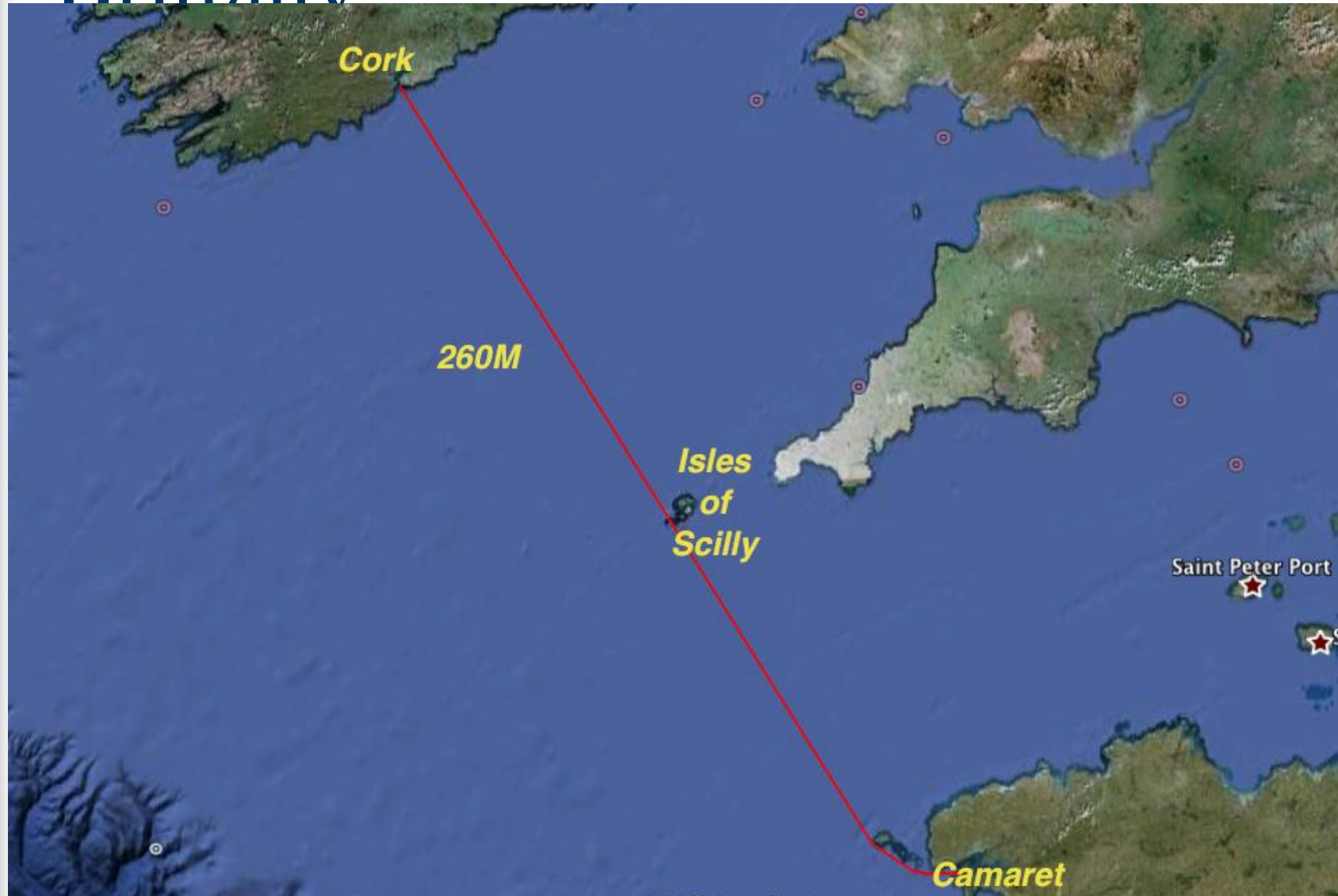
- *Since '02 small craft must have passage plan*
- *Provisions made by IMO in SOLAS regs*
- *Plan must account for weather, tides, limitations of vessel and crew, navigation dangers, contingency plans and leaving information ashore.*



Passage Planning- Cork to Brittany

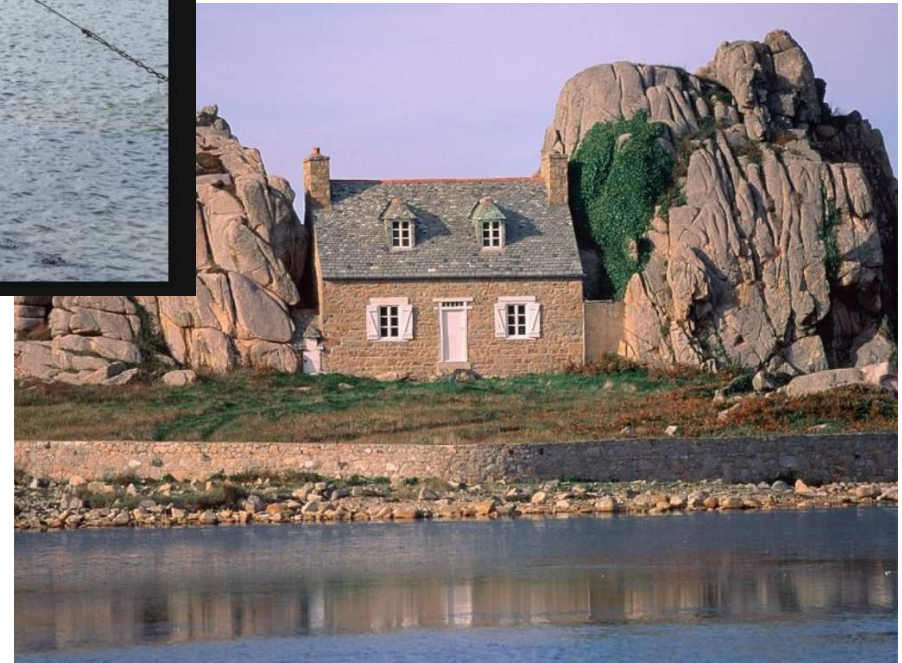
- Objectives - Cruise to and in Brittany
- Constraints - Time ?
- Hazards - Weather, Shipping
- Aids - Charts, GPS
- Route - Direct or via Isles fo Scilly

Passage Planning- Cork to Brittany



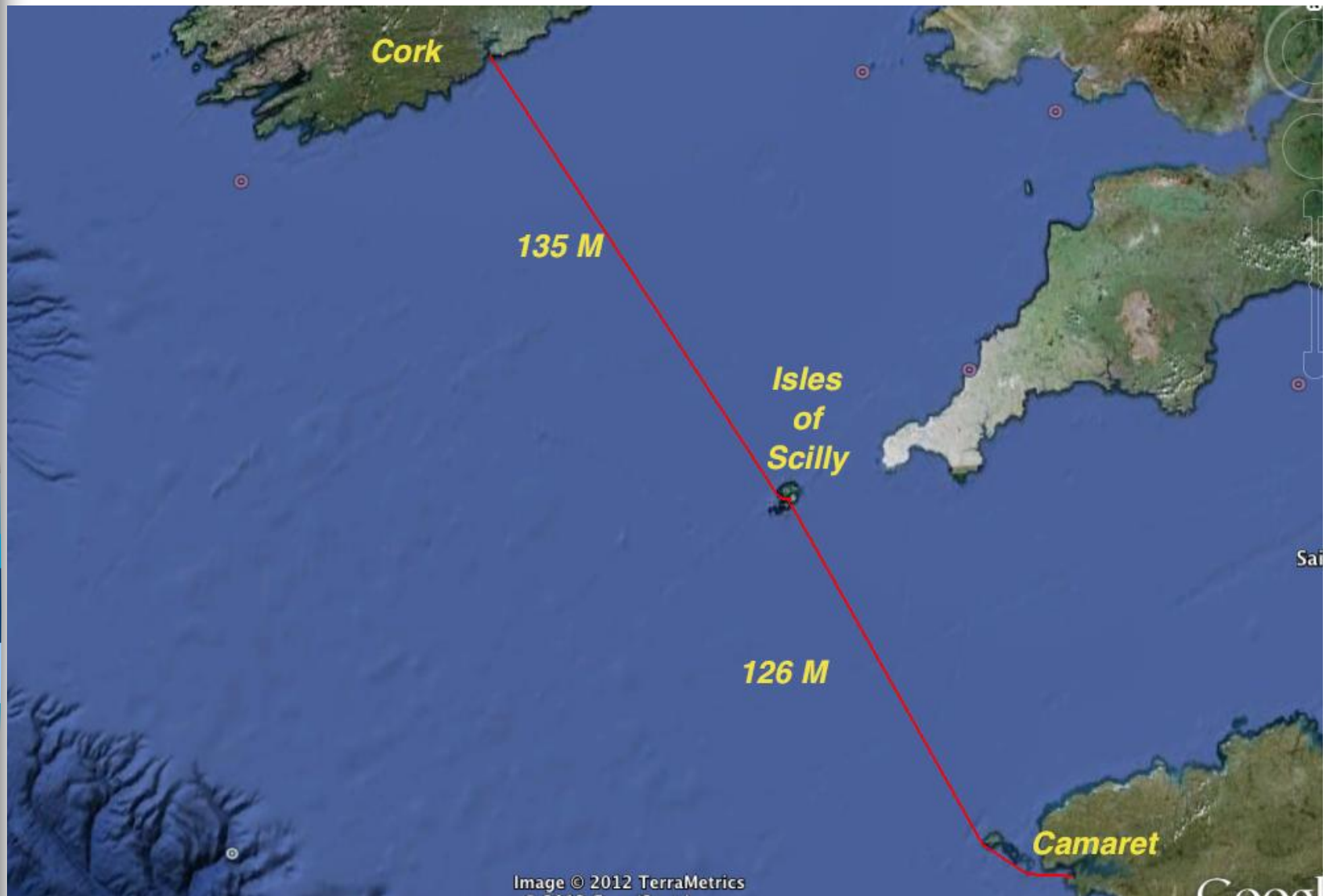
Objectives

- To get to this amazing cruising ground as quickly and safely as possible!



Objectives

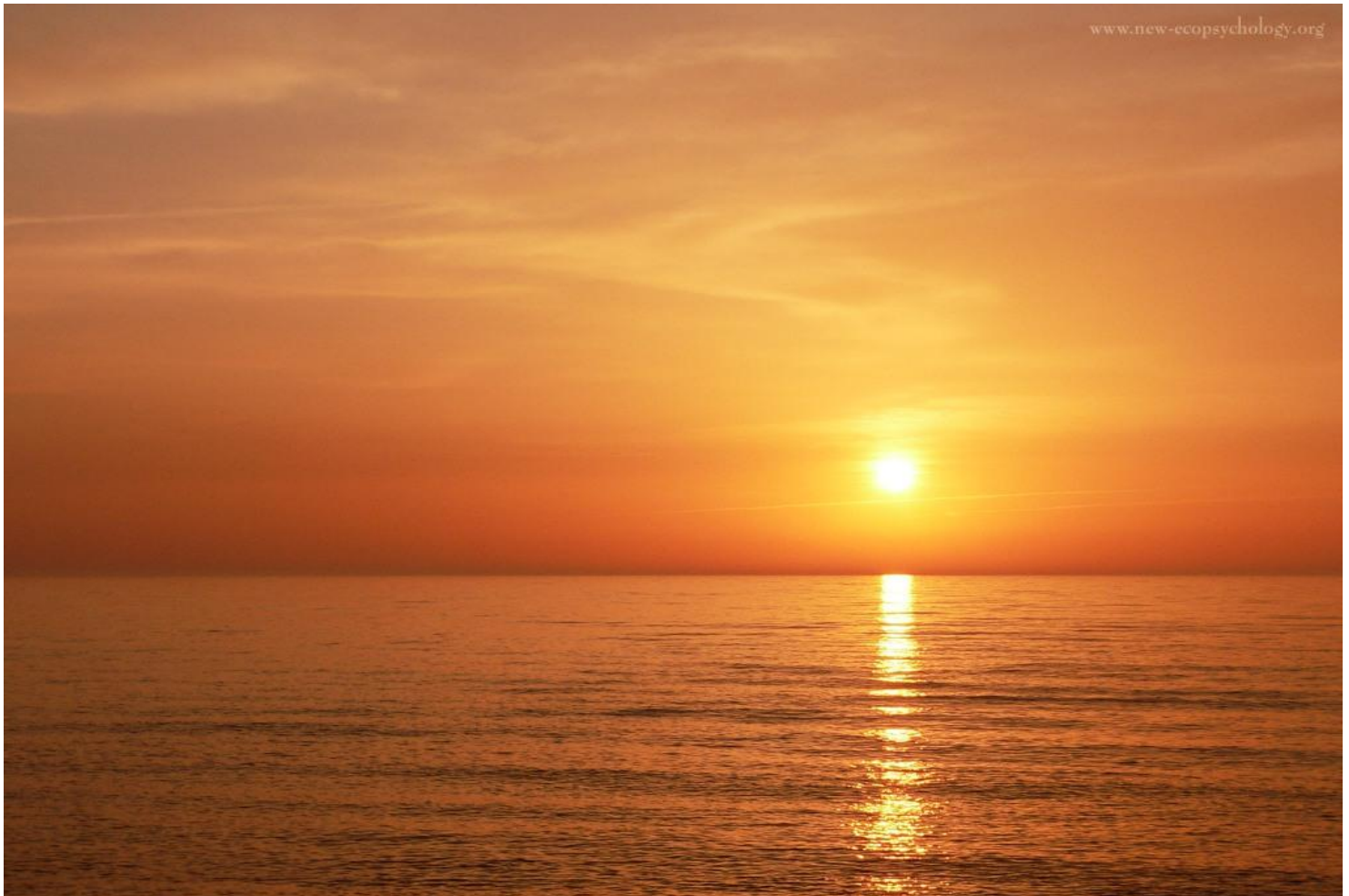
.....may be safer to do journey
in two stages



Constraints

Weather

- Try to get it good!
- What is best time of year



Constraints

- Time of year - temperature





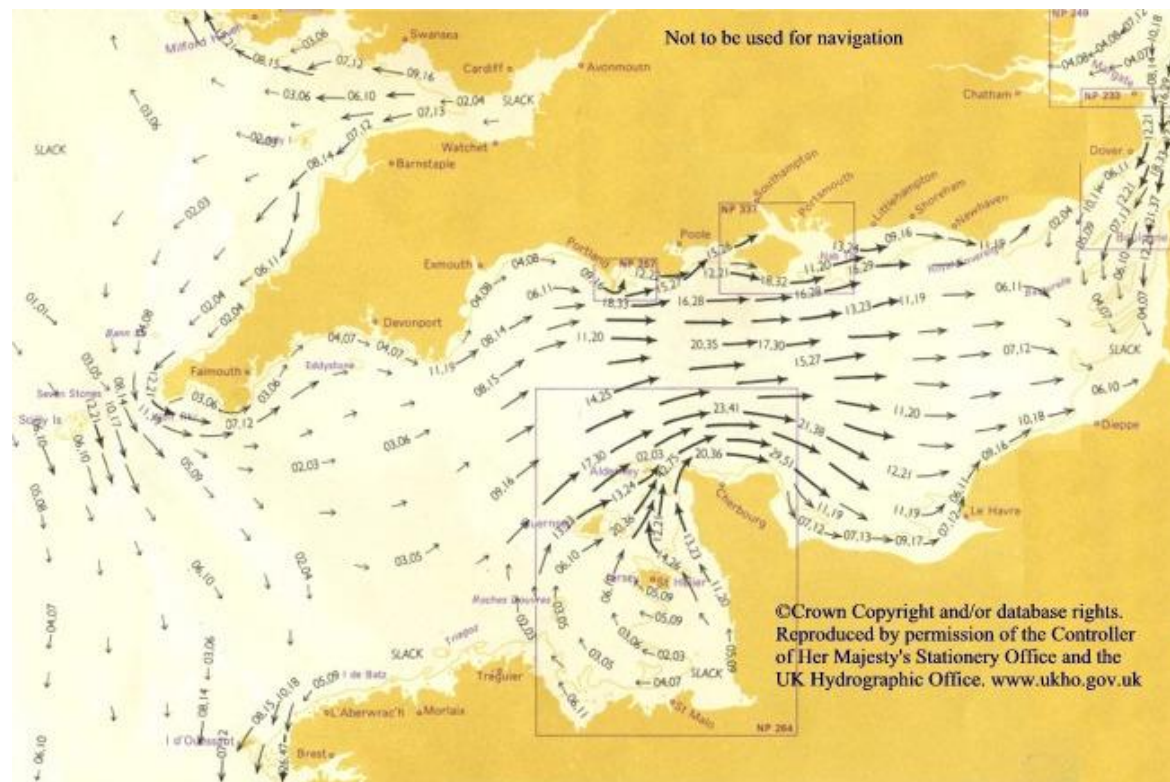
Constraints

- Time of year - daylight



Constraints

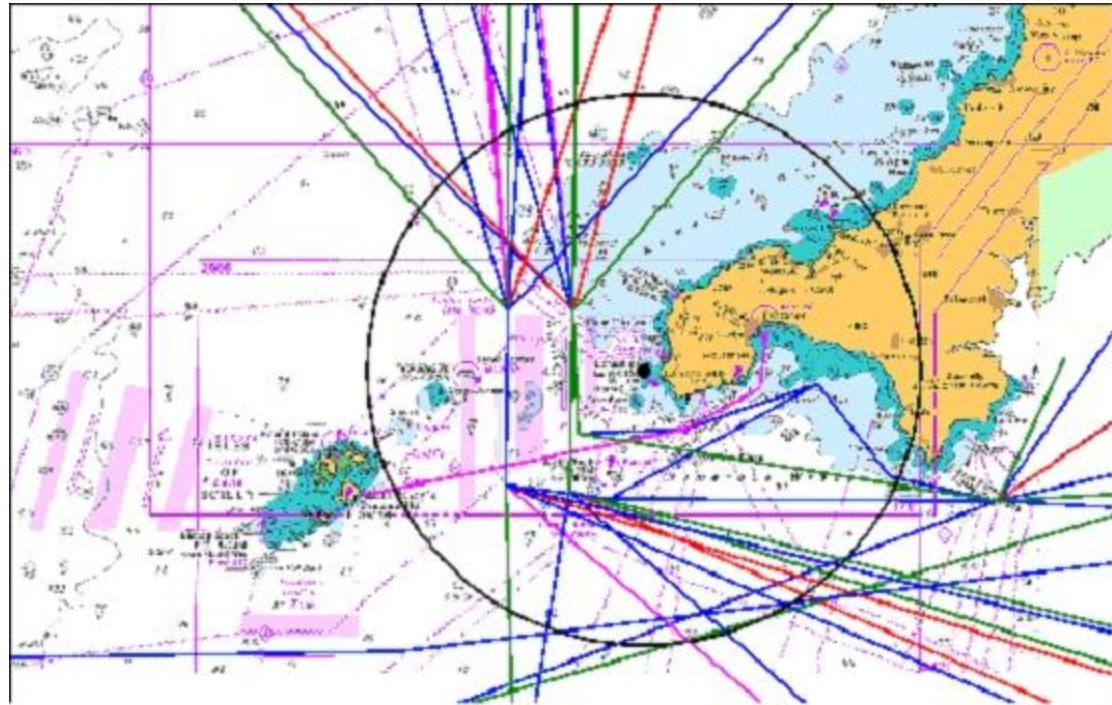
- Tide—stream-Cork, Scillies + **Breton Coast**
- Safe departure + arrival at any stage of tide



Constraints

- TSS

TSS



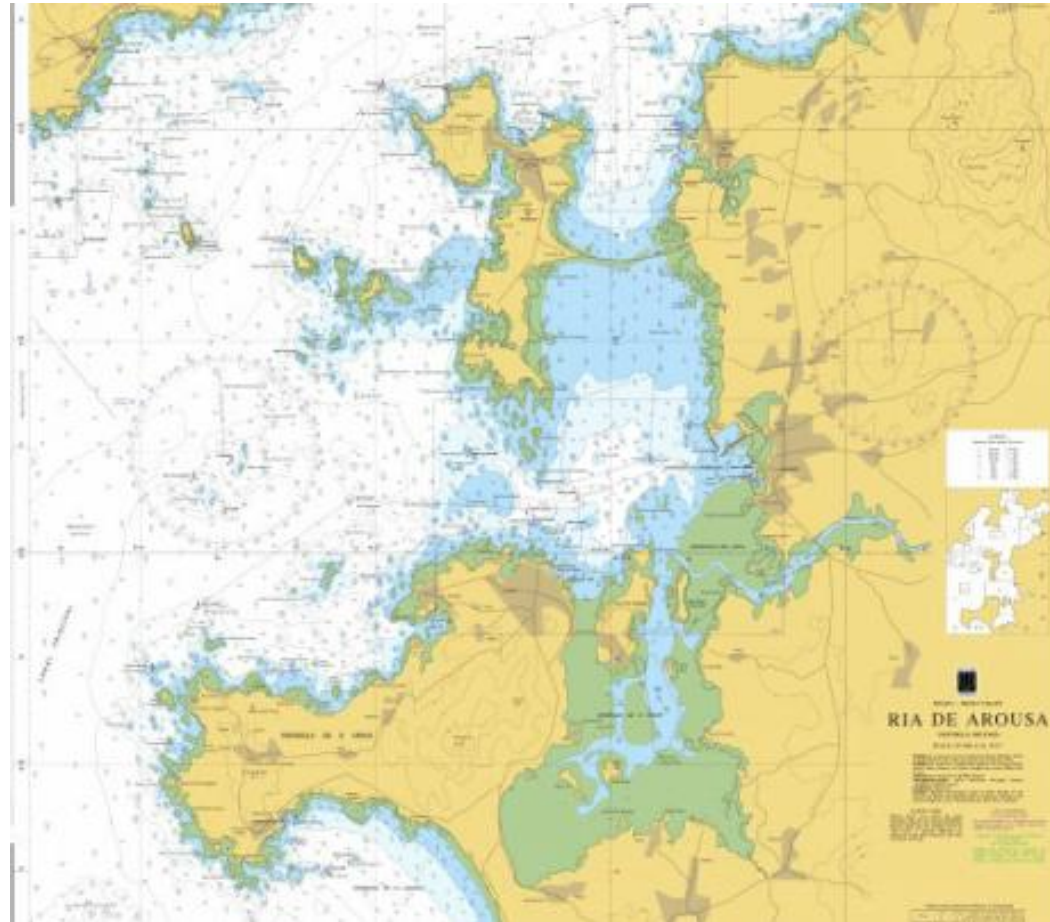
Constraints

- Fuel – capacity – no re- fuelling at sea!
- Carry plenty for voyage!



Hazards

- Rocks, Shallows
- Not on voyage but yes for pilotage later!



Hazards

- Weather – speed, accuracy of nav, crew Visibility, Wind strength + dir + Sea State



Hazards ■ Special Operations



Hazards

■ Fishing



Hazards

- Traffic density –where?



Hazards

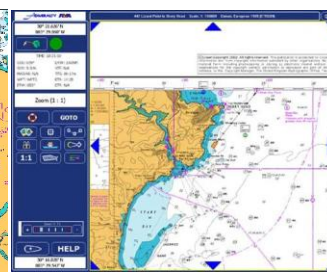
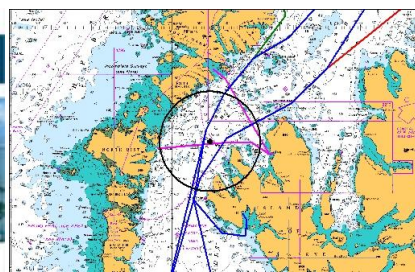
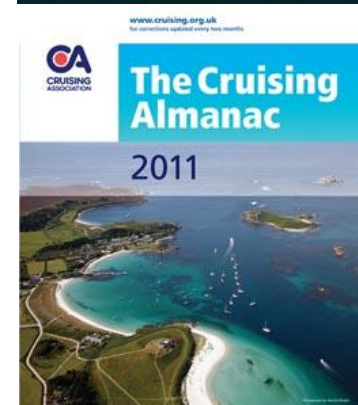
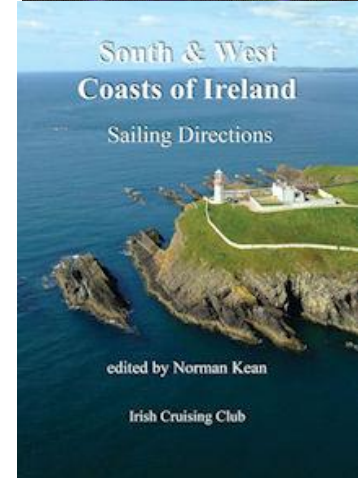
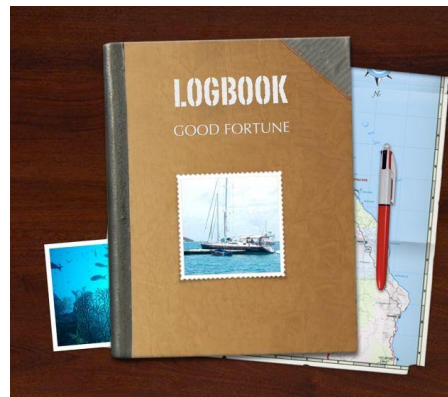
- Traffic density –where?



Passage Planning

Tools

- Google Earth
- Special web sites
- PC Charts
- iPhone, iPad Charts
- Paper Charts
- Pilot Books
- Almanac
- Tidal Stream Atlas
- Google (pics)
- OS Maps
- Guide Books
- Other Books
- Yachting Magazines
- Old logs



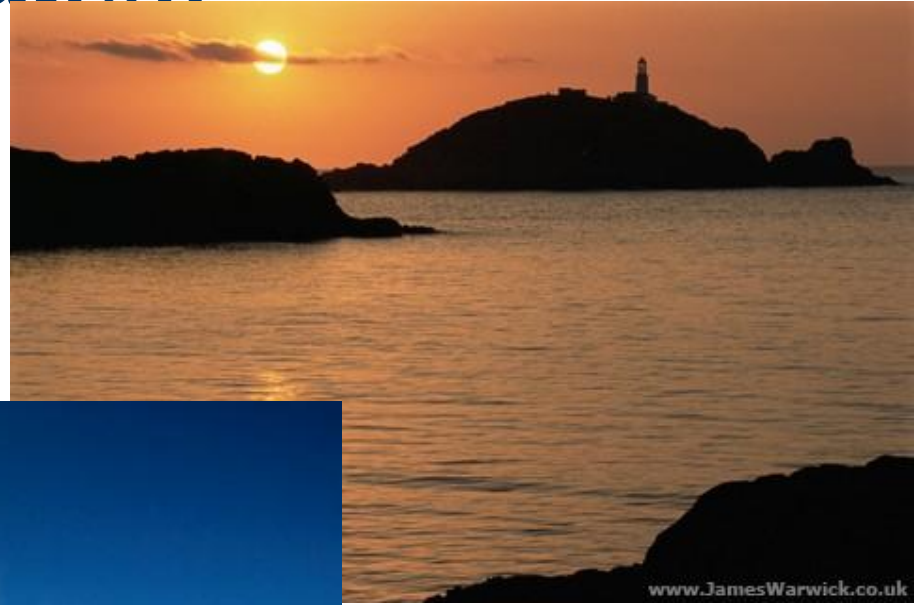
Aids to Navigation

- Beacons, landmarks – day - transits



Aids to Navigation

- Lighthouses, buoys – day and night



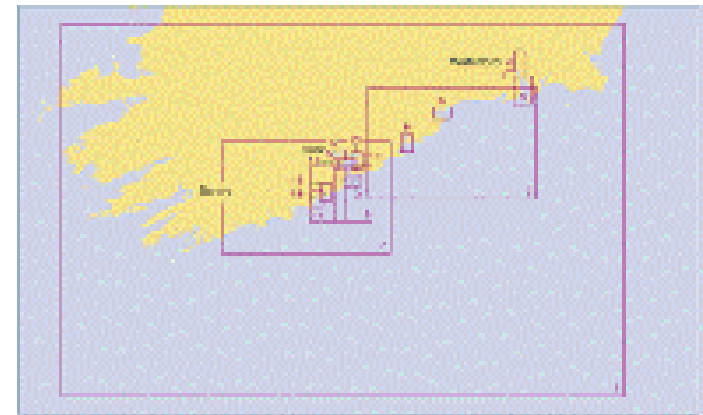
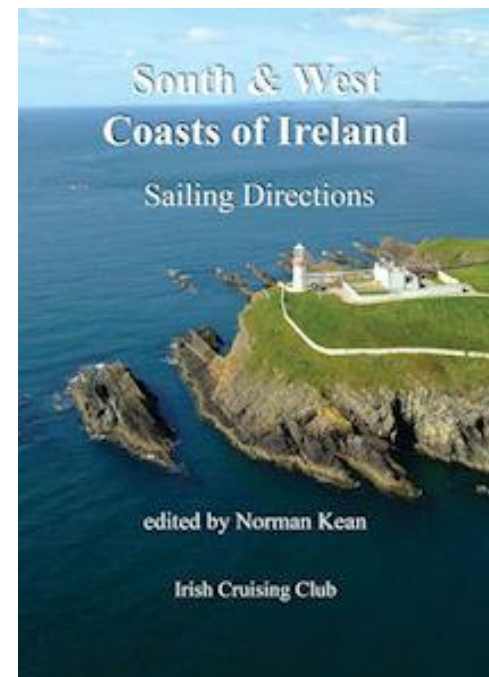
Aids to Navigation

- Turning points and Waypoints
- All characteristics noted
- GPS techniques
- Extra equipment



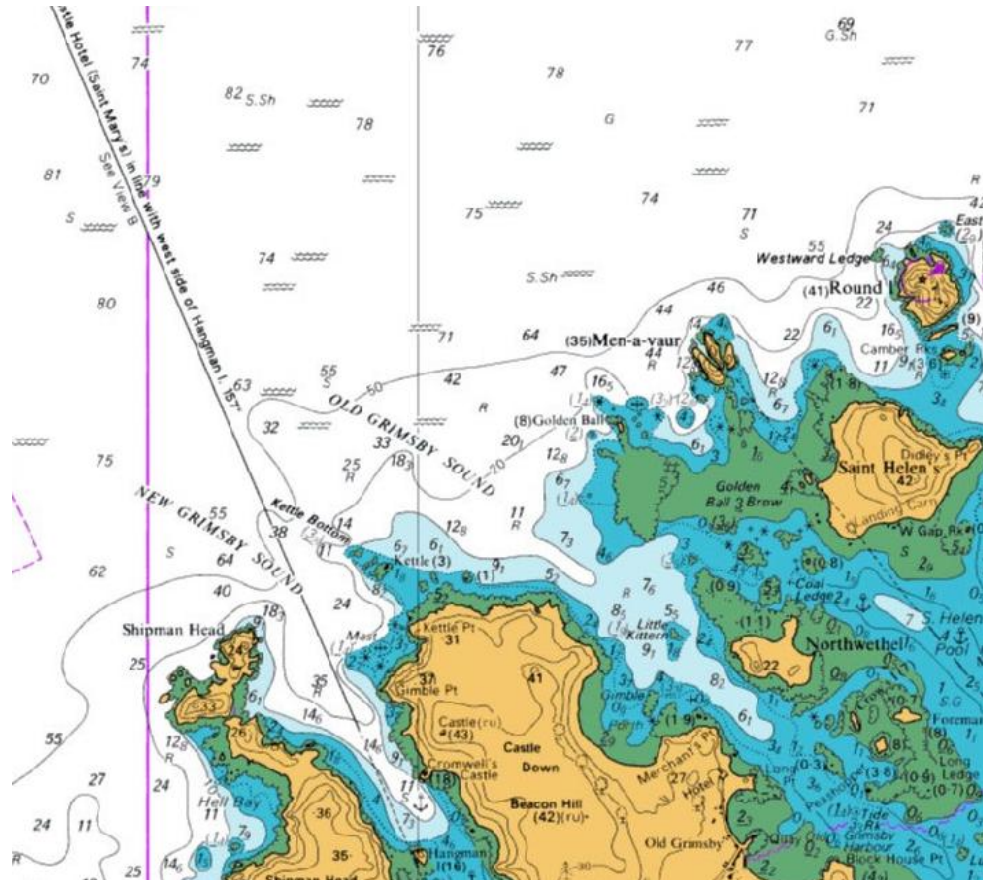
Routes

- Departure and Arrival ports, Diversion ports - pilotage plans
- Updated Charts
- Open Sea passages - tracks, courses, distances - chart + GPS



Passage planning - Tides and tidal streams

- HW + LW Departure and arrival ports





Passage planning - Detailed Plan

- Dangers, Shipping lanes
- Fuel, Water, Gas, Provisions, Safety list
- Crew -watches, abilities etc
- Vessel identification - flags, name etc
- Certification - personal + vessel
- Prepare logbook
- Tango Romeo



Passage Planning - Overall view

- Look at entire passage – paper + electronic
- 260 miles
- Passage and diversion ports- IOS
- Identify arrival time - Want to arrive on ?

Passage Planning - Cork - Brittany

Time for passage - average speed

| Cork to Isles of Scilly - St Marys | | | | |
|--|-------|------|-----|--------|
| Speed | 4 | 5 | 6 | 7 |
| Distance | 135 | 135 | 135 | 135 |
| Hours | 33.75 | 27 | 23 | 19.286 |
| | | | | |
| Isles of Scilly -Camaret - Brittany | | | | |
| Speed | 4 | 5 | 6 | 7 |
| Distance | 126 | 126 | 126 | 126 |
| Hours | 31.5 | 25.2 | 21 | 18 |

Passage Planning - Arrival - alternatives



Passage Planning - Arrival - alternatives

Isles of Scilly - Concarneau

| | | | | |
|----------|-------|-----|-----|-----|
| Speed | 4 | 5 | 6 | 7 |
| Distance | 175 | 175 | 175 | 175 |
| Hours | 43.75 | 35 | 29 | 25 |

Isles of Scilly -L'AberWrac'h- Brittany

| | | | | |
|----------|-----|------|-----|-----|
| Speed | 4 | 5 | 6 | 7 |
| Distance | 108 | 108 | 108 | 108 |
| Hours | 27 | 21.6 | 18 | 15 |

Passage Planning -Crew transfer - airports



Cork - Rennes

Cork - Paris

Ferry to Roscoff
(near Morlaix)

Rail in blue

Bus to other ports



Passage Planning

- Berth to berth
- Pilotage Plans
- Dangers, Shipping lanes etc
- Fuel, Water, Gas, Provisions, Safety list
- Crew -watches, abilities etc
- Vessel identification - flags, name etc
- Certification - personal + vessel
- Prepare logbook
- Tango Romeo