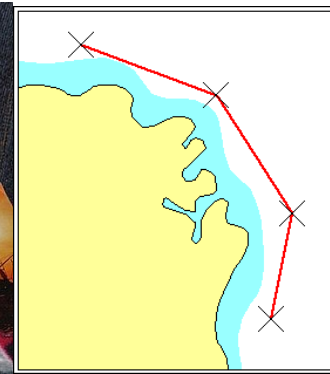
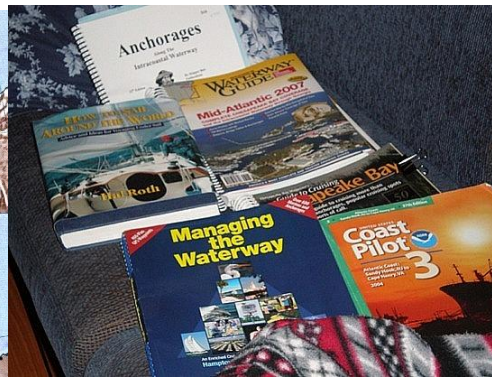


# Passage Planning



- *Plan of vessel's voyage start to finish*
- *Leaving the dock and harbour area*
- *En-route portion of voyage*
- *Approaching destination and mooring*
- *ie 'berth to berth' plan*





# Passage Planning

- *Since '02 small craft must have passage plan*
- *Provisions made by IMO in SOLAS regs*
- *Plan must account for weather, tides, limitations of vessel and crew, navigation dangers, contingency plans and leaving information ashore.*



# Passage Planning- Cork to Galicia

- Objectives - Cruise to and in Galicia
- Constraints - Time ?
- Hazards - Weather, Shipping
- Aids - Charts, GPS
- Route - Direct      Cork- Tresco

# Passage Planning- Cork to Galicia



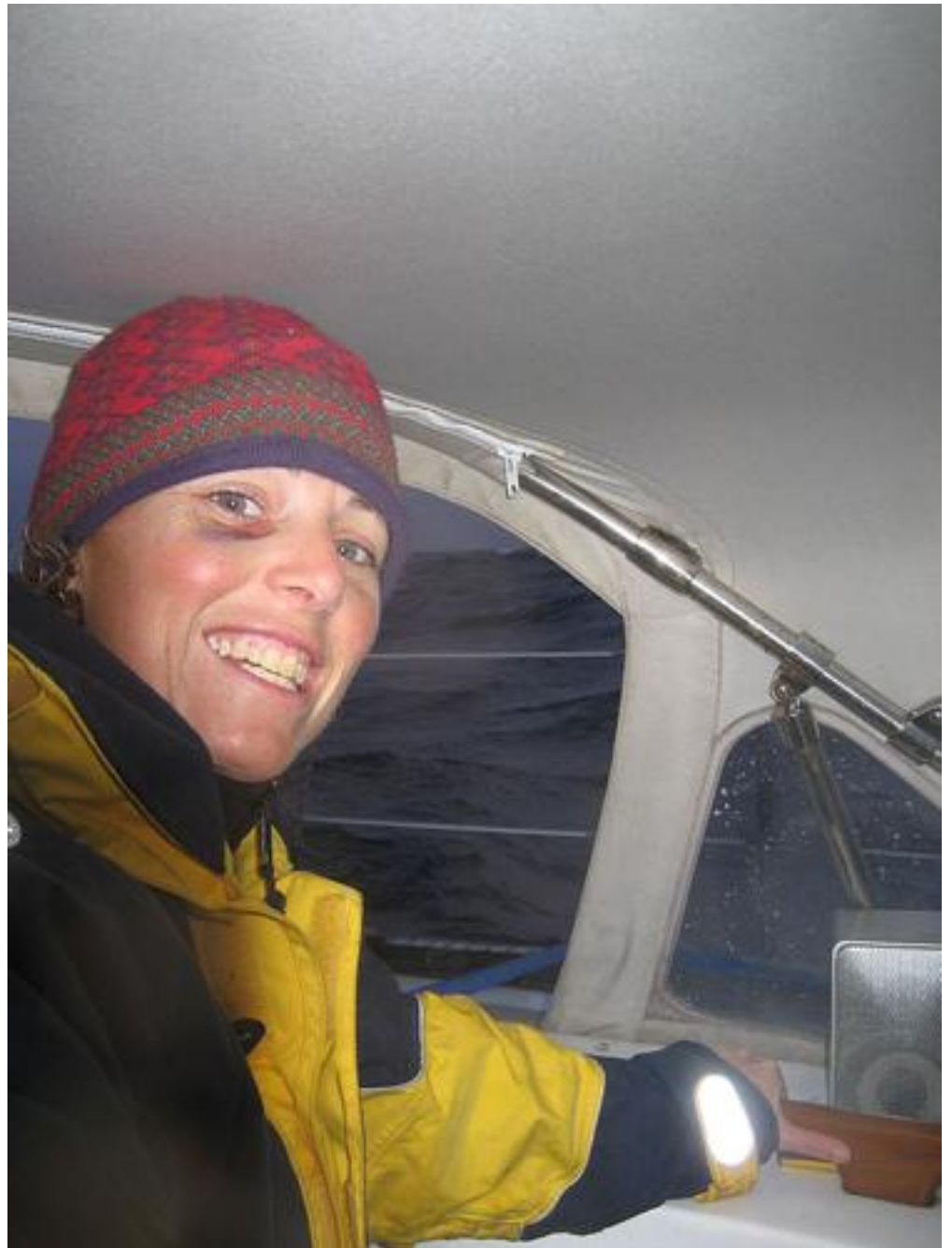
# Objectives

- To get to this amazing cruising ground as quickly as possible!



# Objectives

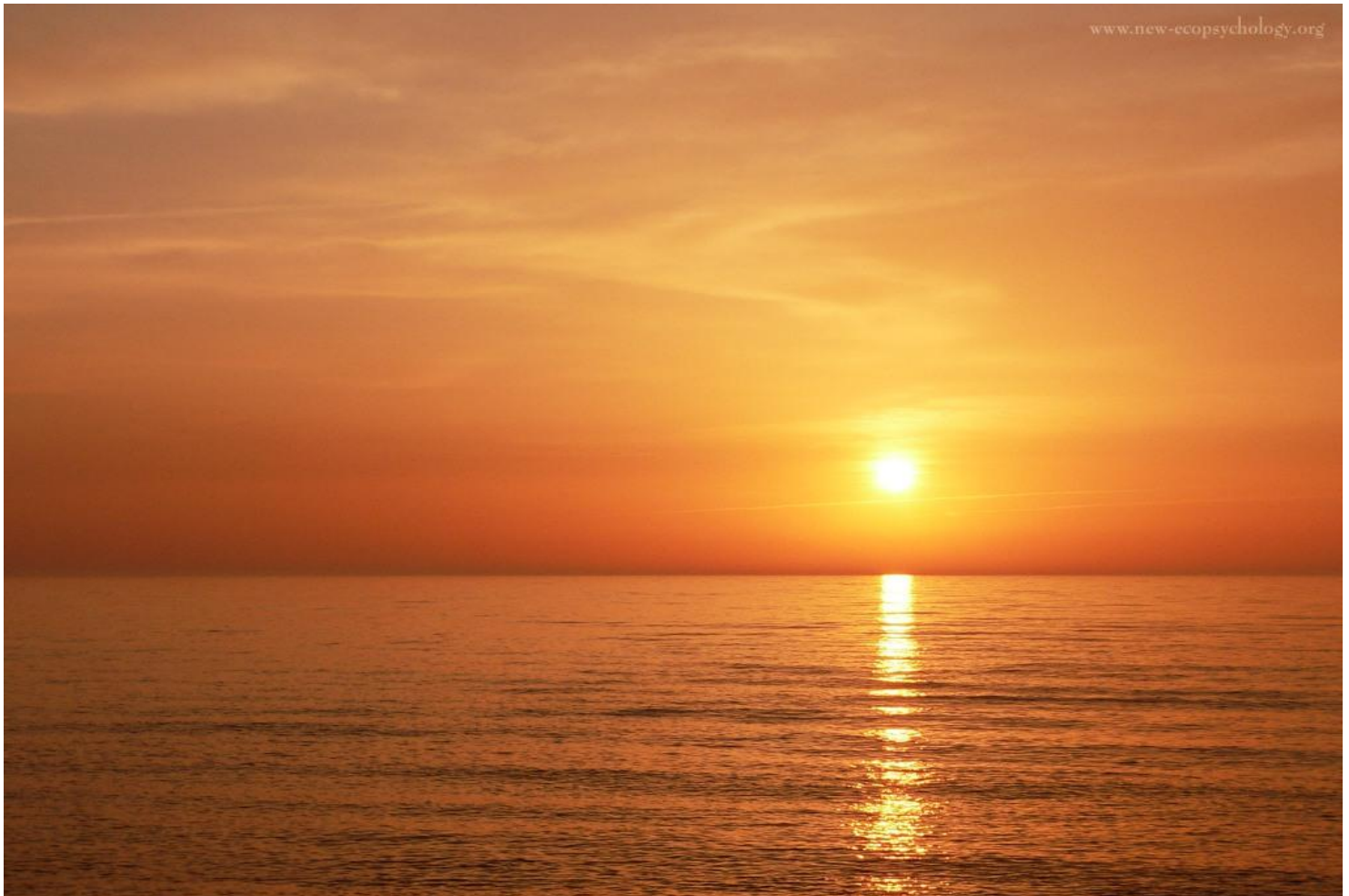
- ....to do so will involve passage with at least 3 nights at sea



# Constraints

## Weather

- Try to get it good!
- What is best time of year



# Constraints

- Time of year - temperature







# Constraints

- Time of year - daylight



# Constraints

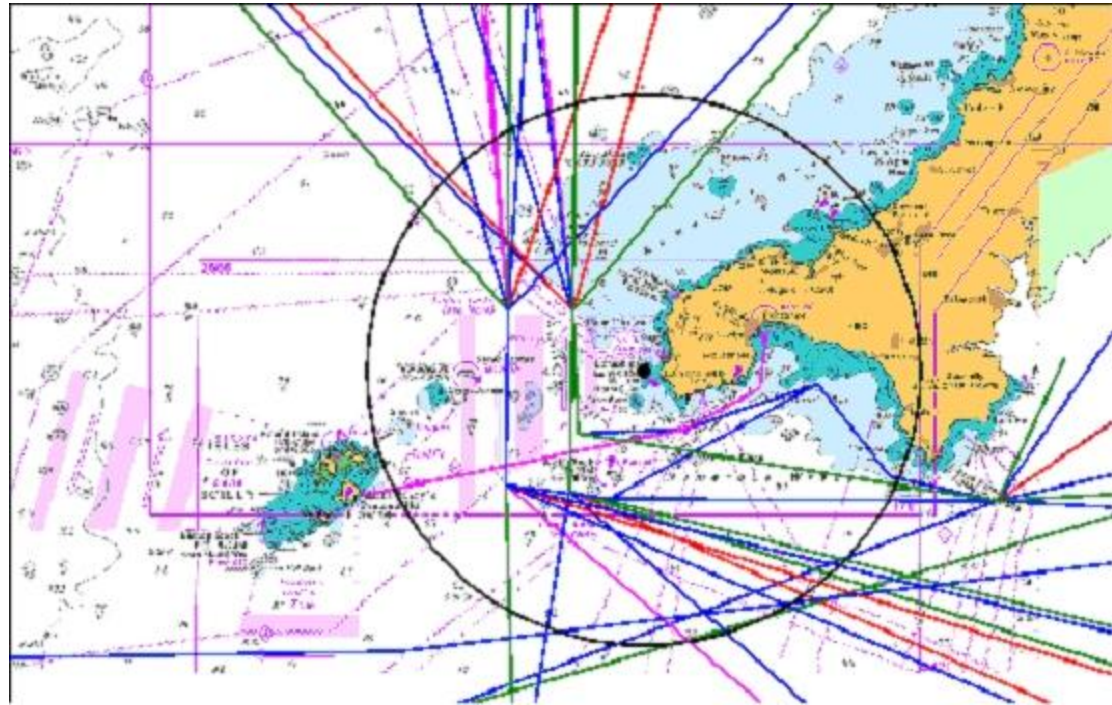
- Tide –stream off Cork and Spanish Coast
- Safe departure + arrival at any stage of tide



# Constraints

- TSS

TSS



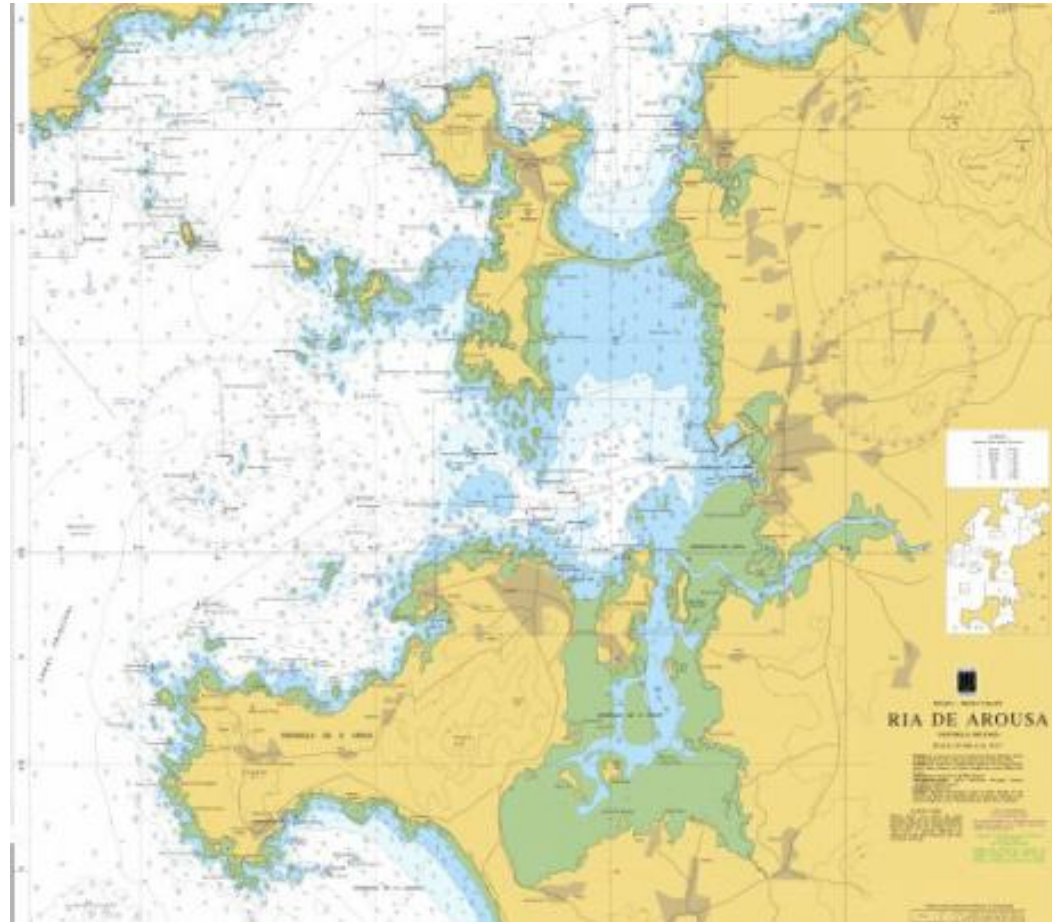
# Constraints

- Fuel – capacity – no re- fuelling at sea!
- Carry plenty for voyage!



# Hazards

- Rocks, Shallows
- Not on voyage but yes for pilotage later!



# Hazards

- Weather – speed, accuracy of nav, crew Visibility, Wind strength + dir + Sea State



# Hazards ■ Special Operations



# Hazards

- Fishing





# Hazards

- Traffic density –where?



# Hazards

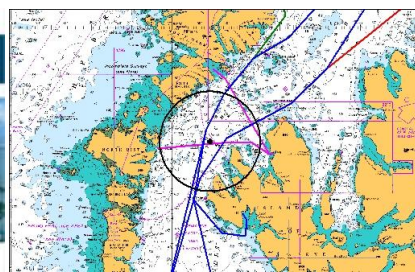
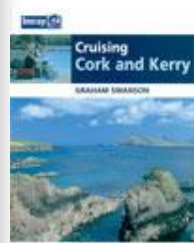
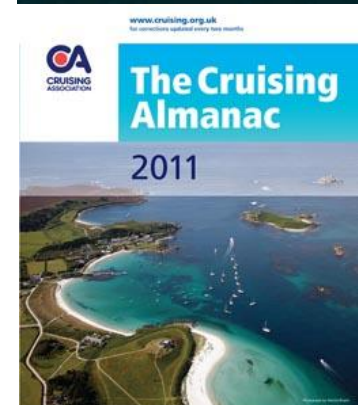
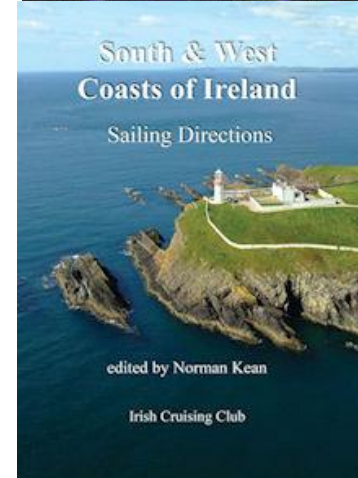
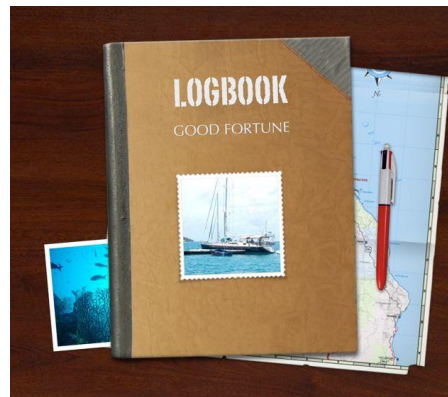
- Traffic density –where?



# Passage Planning

## Tools

- Google Earth
- Special web sites
- PC Charts
- iPhone, iPad Charts
- Paper Charts
- Pilot Books
- Almanac
- Tidal Stream Atlas
- Google (pics)
- OS Maps
- Guide Books
- Other Books
- Yachting Magazines
- Old logs



# Aids to Navigation

- Beacons, landmarks – day - transits



# Aids to Navigation

- Lighthouses, buoys – day and night



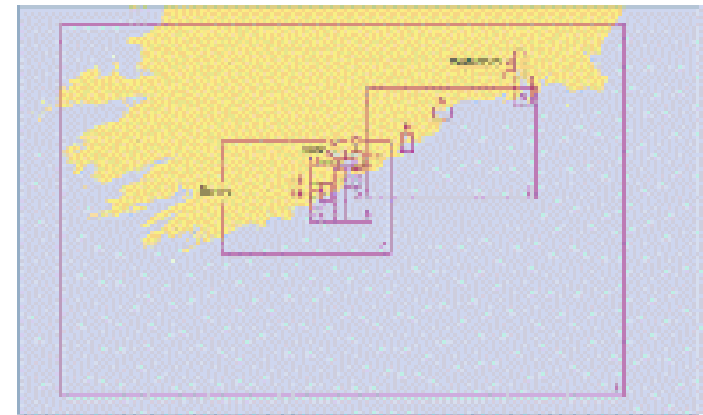
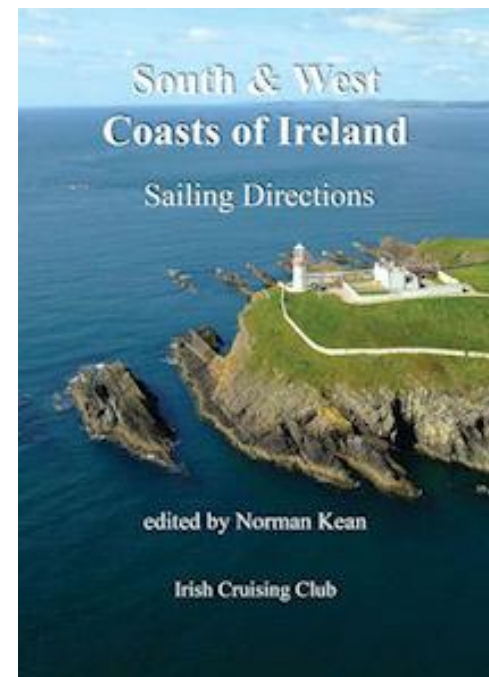
# Aids to Navigation

- Turning points and Waypoints
- All characteristics noted
- GPS techniques
- Extra equipment



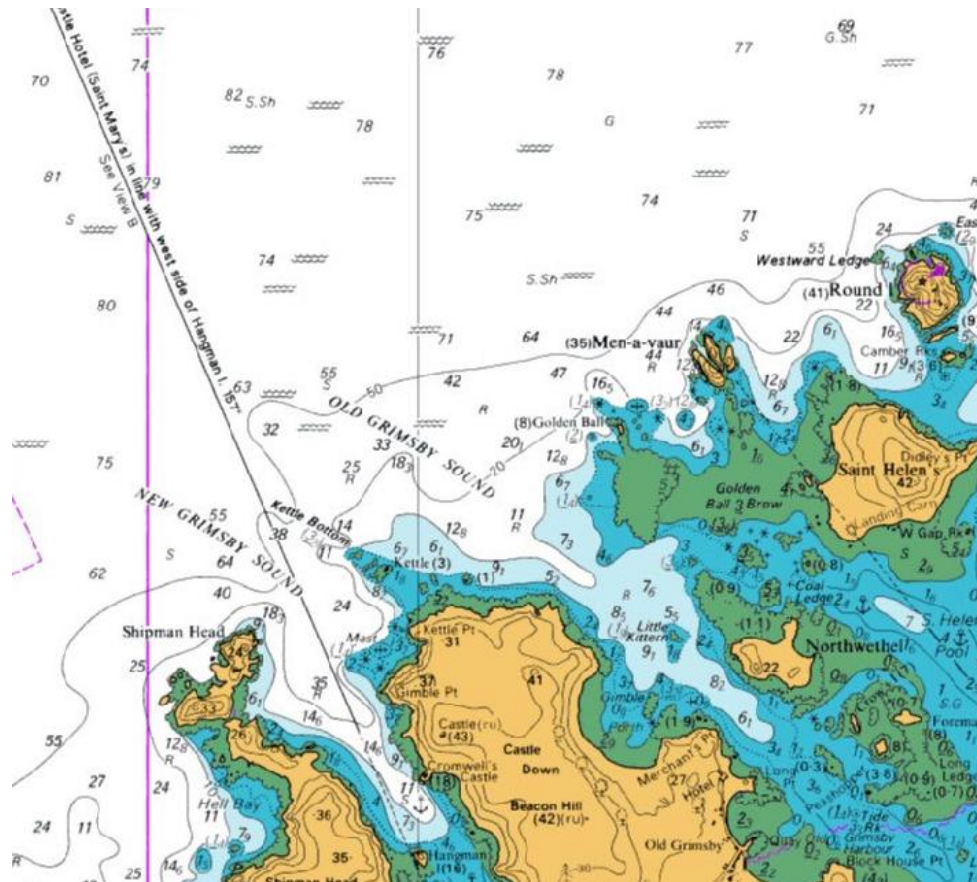
# Routes

- Departure and Arrival ports, Diversion ports - pilotage plans
- Updated Charts
- Open Sea passages - tracks, courses, distances - chart + GPS



# Passage planning - Tides and tidal streams

- HW + LW Departure and arrival ports







## Passage planning - Detailed Plan

- Dangers, Shipping lanes
- Fuel, Water, Gas, Provisions, Safety list
- Crew -watches, abilities etc
- Vessel identification - flags, name etc
- Certification - personal + vessel
- Prepare logbook
- Tango Romeo



# Passage Planning - Overall view

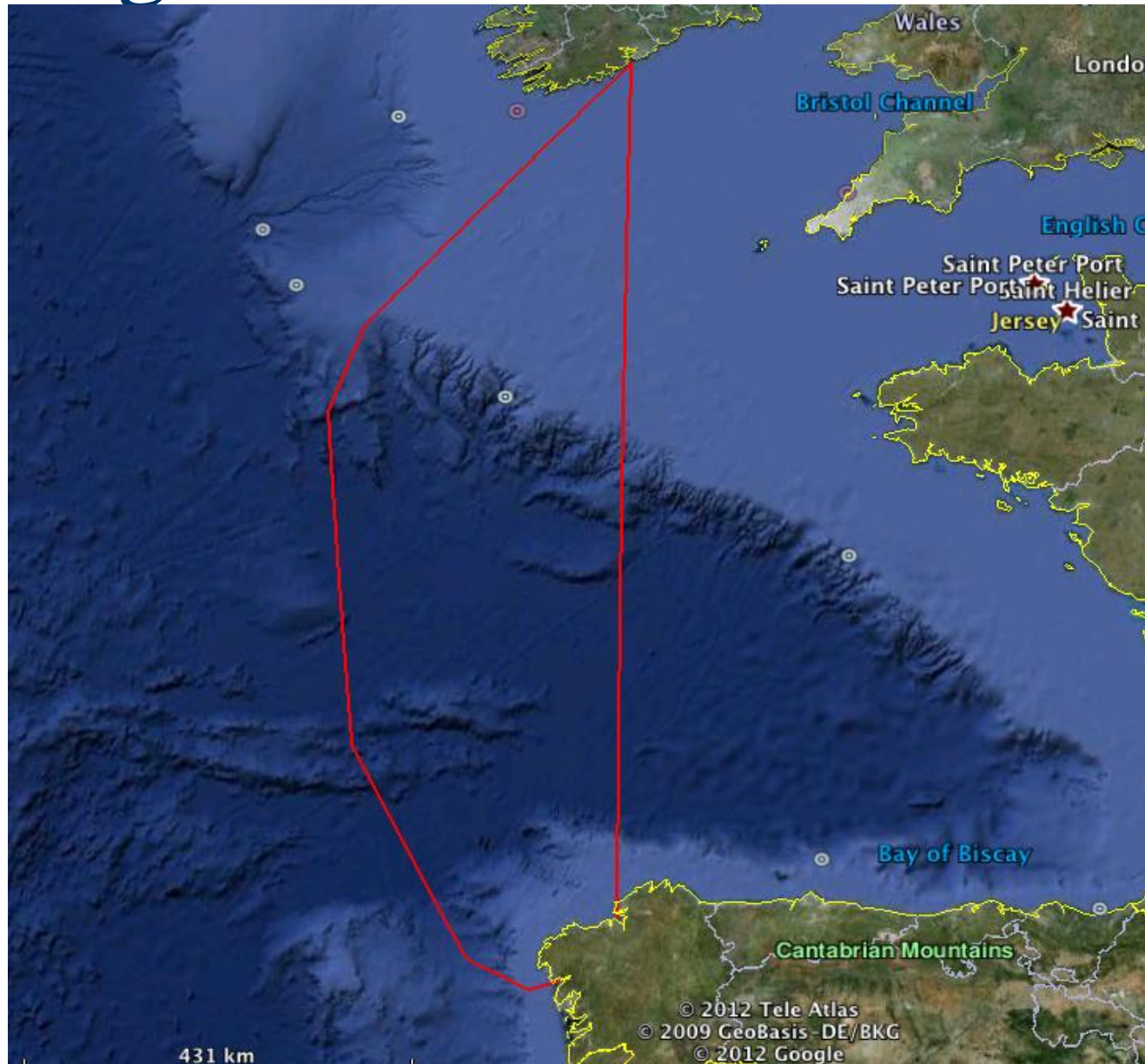
- Look at entire passage – paper + electronic
- 500 miles Course 180T
- Passage and diversion ports- None!
- Identify arrival time - Want to arrive on ?

# Passage Planning - Cork - Galicia

Time for passage - average speed

Distance (M)	500	500	500	500
Speed (kn)	5	6	7	8
Time (Hrs)	100	83.3 333 333 3	71.4 2857 143	62.5
Days	4.1	3.47	2.97	2.60

# Passage Routes - alternatives



# Passage Planning - Arrival - alternatives



# Passage Planning -Crew transfer - airports



Santiago (Dublin)

Coruna

Vigo (London)

Rail and motorway  
connect these 3 cities

Bus to other ports



# Passage Planning

- Berth to berth
- Pilotage Plans
- Dangers, Shipping lanes etc
- Fuel, Water, Gas, Provisions, Safety list
- Crew -watches, abilities etc
- Vessel identification - flags, name etc
- Certification - personal + vessel
- Prepare logbook
- Tango Romeo