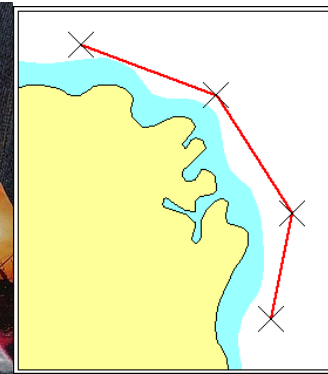
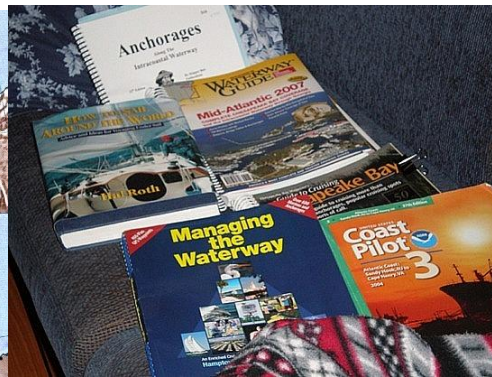


Passage Planning



- *Plan of vessel's voyage start to finish*
- *Leaving the dock and harbour area*
- *En-route portion of voyage*
- *Approaching destination and mooring*
- *ie 'berth to berth' plan*





Passage Planning

- *Since '02 small craft must have passage plan*
- *Provisions made by IMO in SOLAS regs*
- *Plan must account for weather, tides, limitations of vessel and crew, navigation dangers, contingency plans and leaving information ashore.*



Passage Planning- Cork to IOS

- Objectives - Cruise to Isles of Scilly
- Constraints - Time slot 26 May - June 1
- Hazards - Weather, Shipping
- Aids - Charts, GPS
- Route - Direct Cork- Tresco

Passage Planning- Cork to IOS



Objectives

- To get to this amazing cruising ground as quickly as possible!





Objectives

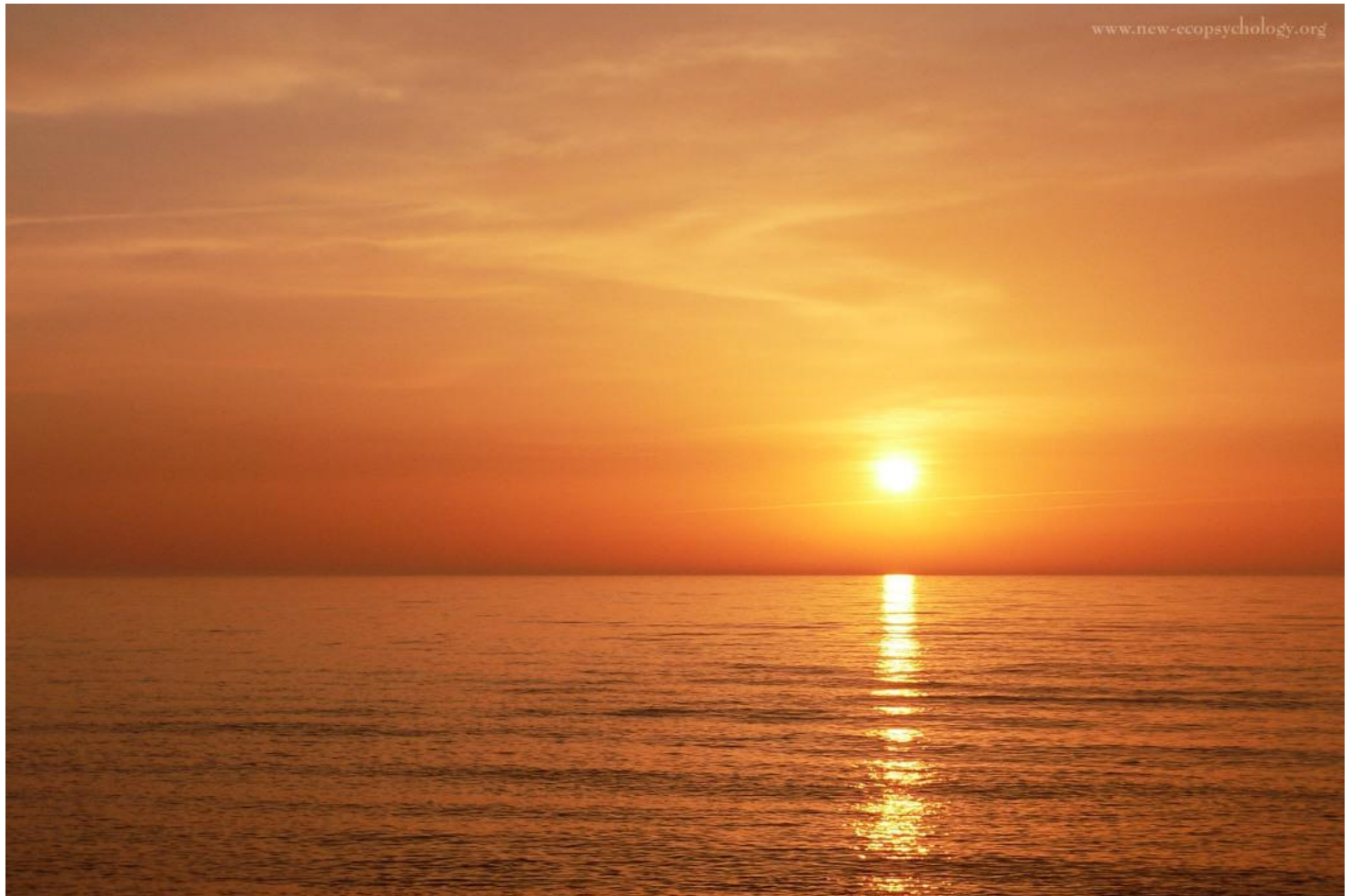
-to do so will involve an overnight passage

QuickTime™ and a
decompressor
are needed to see this picture.

Constraints

Weather

- Should be good!
- Best time of year



Constraints

- Time of year - temperature



Constraints

- Time of year - daylight



Constraints

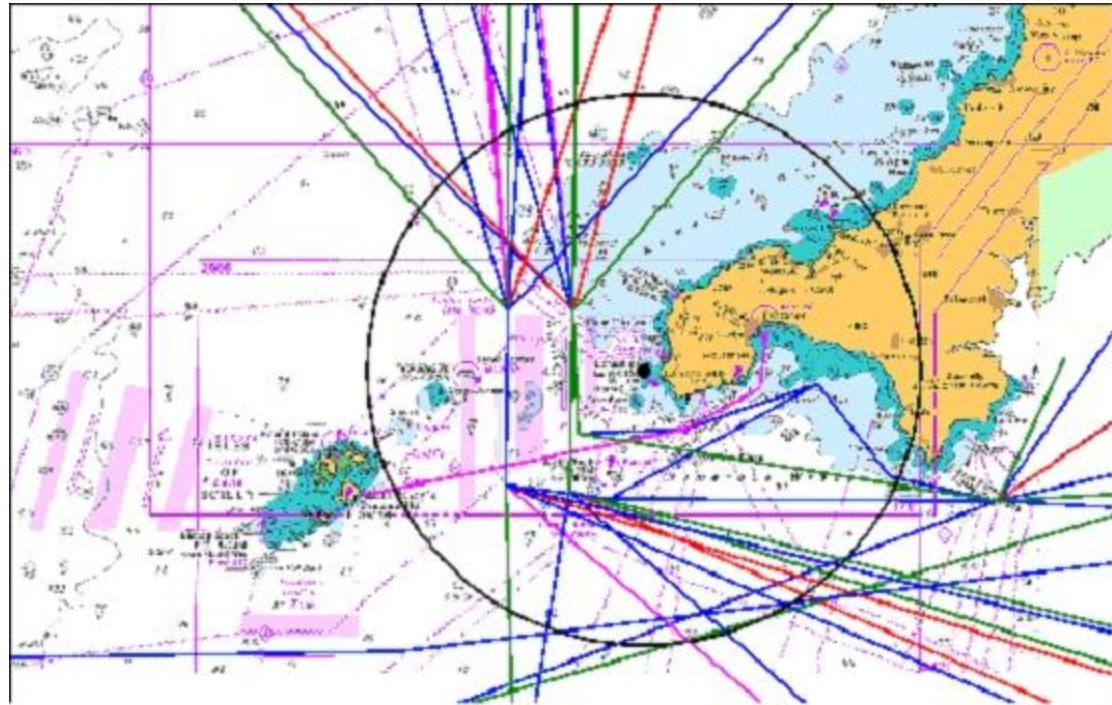
- Tide –stream off Cork and Scillies Coast
- Safe departure + arrival at any stage of tide



Constraints

- TSS

TSS



Constraints

- Fuel – capacity – no re- fuelling at sea!
- Carry plenty for voyage!



Hazards

- Rocks, Shallows
- Not on voyage but yes for pilotage later!



Hazards

- Weather – speed, accuracy of nav, crew Visibility, Wind strength + dir + Sea State



Hazards ■ Special Operations



Hazards

■ Fishing



Hazards

- Traffic density –where?



Hazards

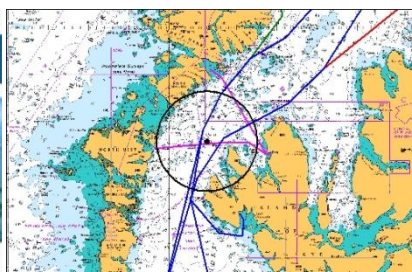
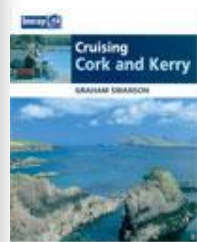
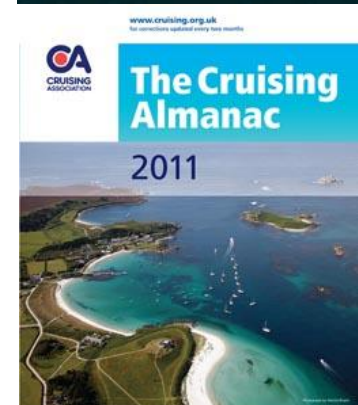
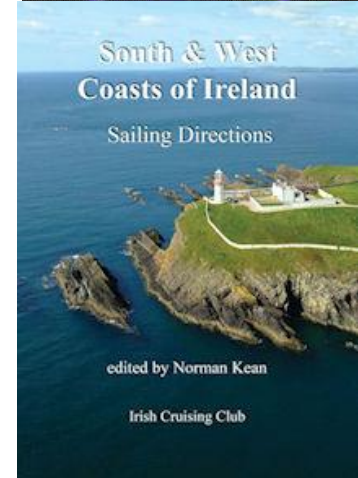
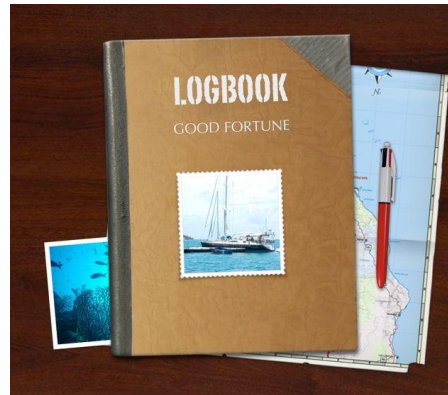
- Traffic density –where?



Passage Planning

Tools

- Google Earth
- Special web sites
- PC Charts
- iPhone, iPad Charts
- Paper Charts
- Pilot Books
- Almanac
- Tidal Stream Atlas
- Google (pics)
- OS Maps
- Guide Books
- Other Books
- Yachting Magazines
- Old logs



Aids to Navigation

- Beacons, landmarks – day - transits



Aids to Navigation

- Lighthouses, buoys – day and night



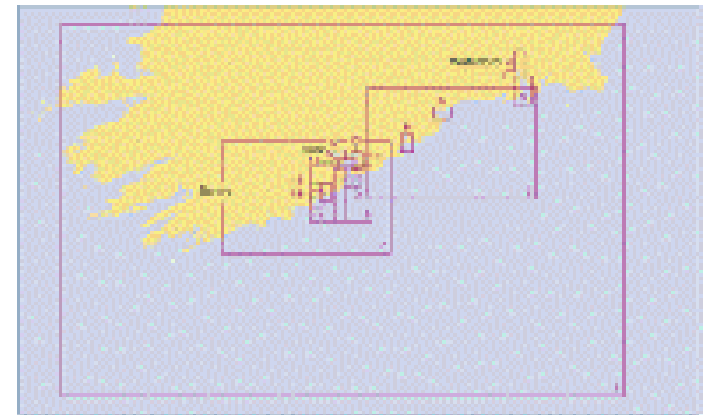
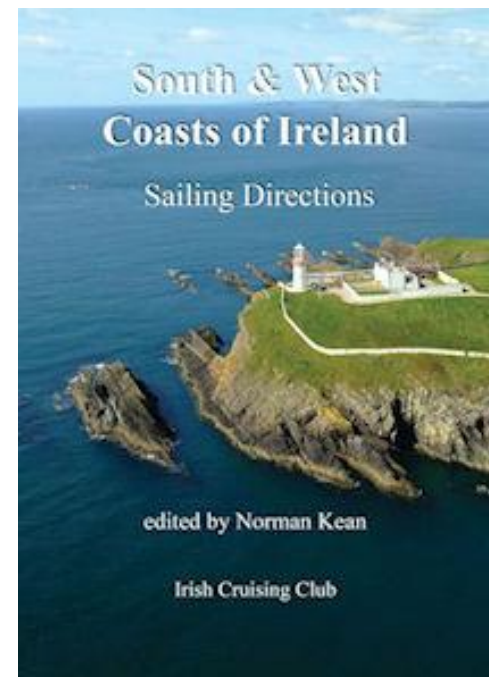
Aids to Navigation

- Turning points and Waypoints
- All characteristics noted
- GPS techniques
- Extra equipment



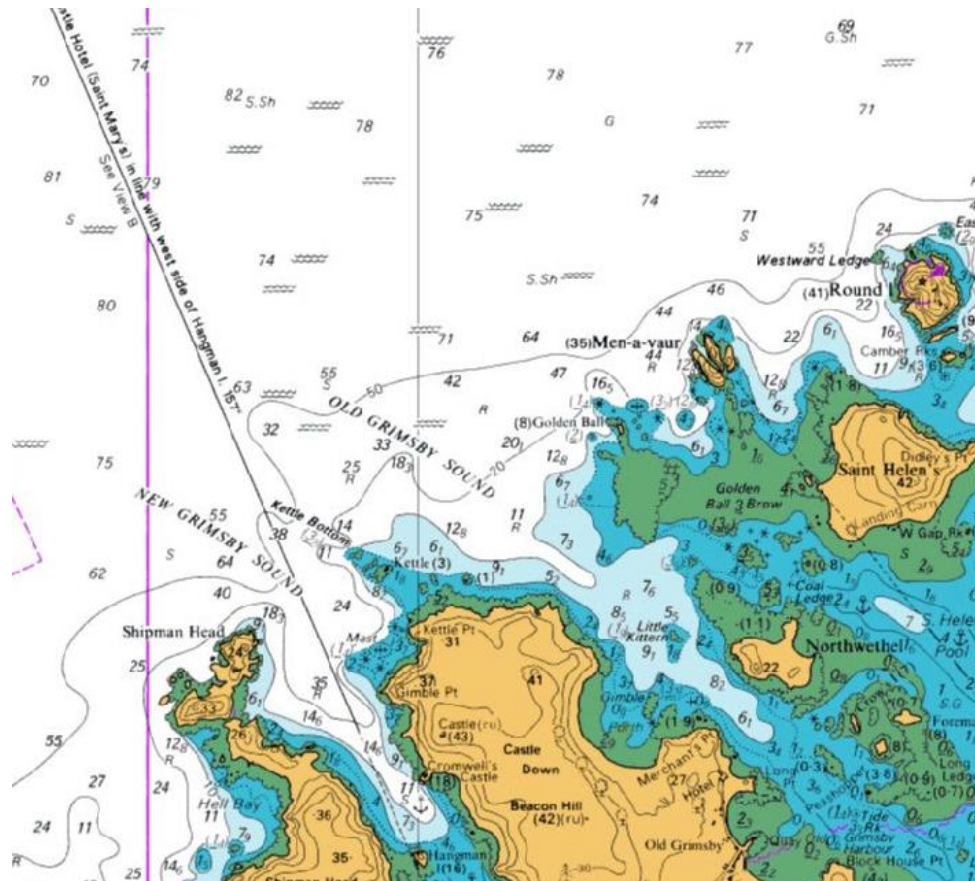
Routes

- Departure and Arrival ports, Diversion ports - pilotage plans
- Updated Charts
- Open Sea passages - tracks, courses, distances - chart + GPS



Passage planning - Tides and tidal streams

- HW + LW Departure and arrival ports





Passage planning - Detailed Plan

- Dangers, Shipping lanes
- Fuel, Water, Gas, Provisions, Safety list
- Crew -watches, abilities etc
- Vessel identification - flags, name etc
- Certification - personal + vessel
- Prepare logbook
- Tango Romeo



Passage Planning - Overall view

- Look at entire passage – paper + electronic
- 135miles Course 152M
- Passage and diversion ports- None!
- Identify arrival time - Want to arrive on Mon 28 May



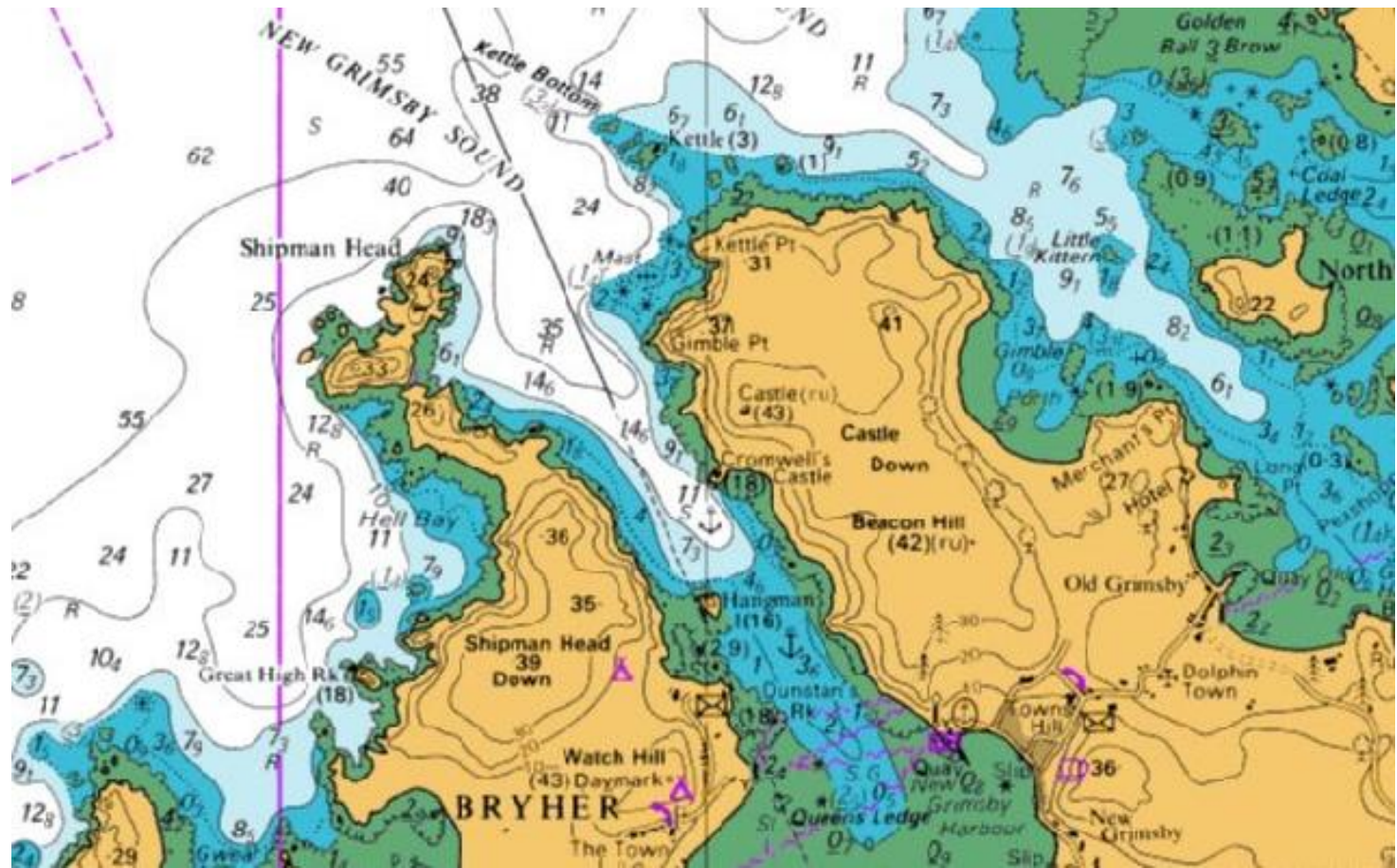
Passage Planning

For arrival Mon morning 28

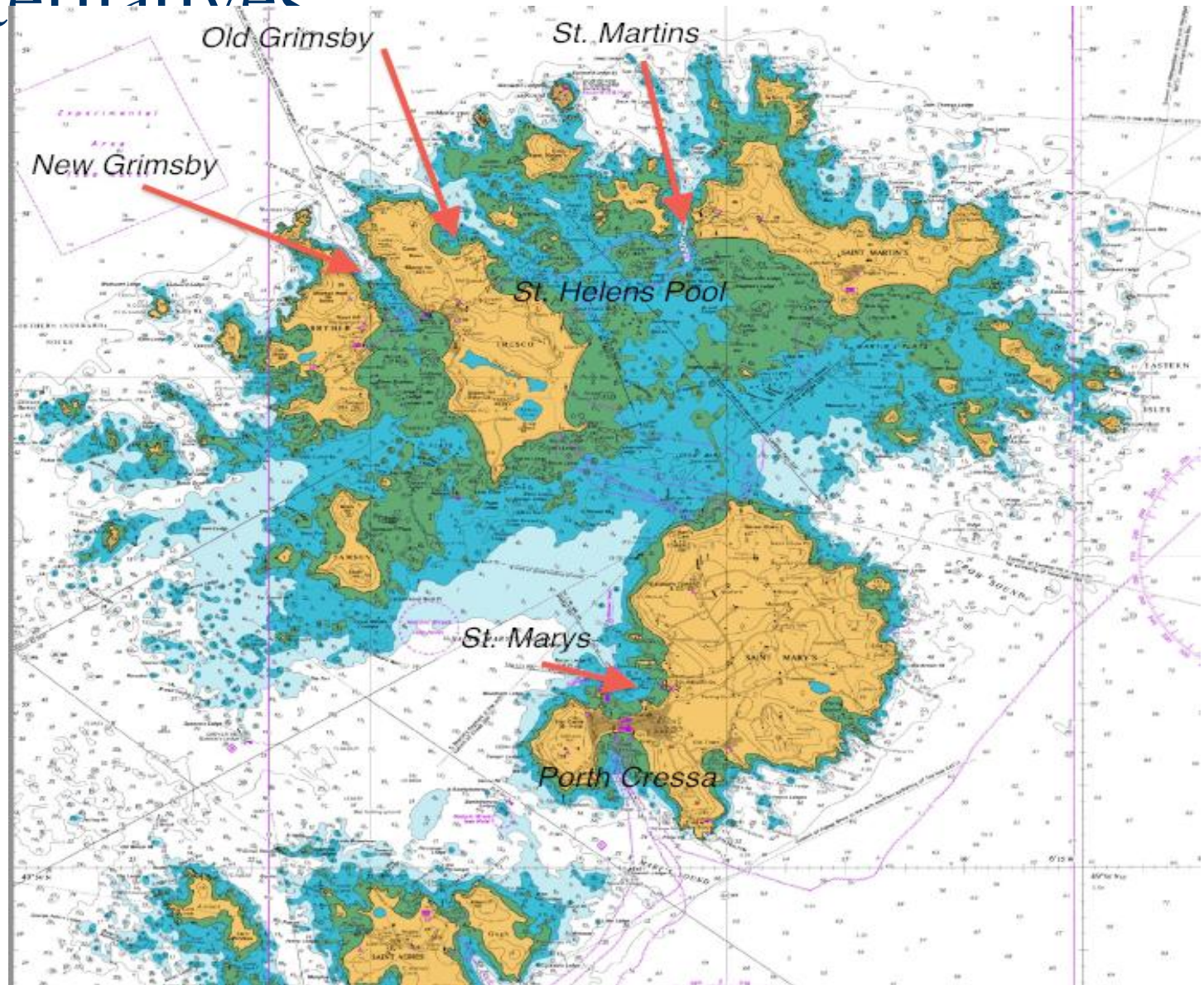
- depart Sat 26/Sun 27

Distance (M)	135	135	135	135
Speed (kn)	4	5	6	7
Time (hrs)	33.75	27	22.5	19.286
Depart Sat	22:00			
Depart Sun		00:00	08:00	10:00

Passage Planning - Arrival



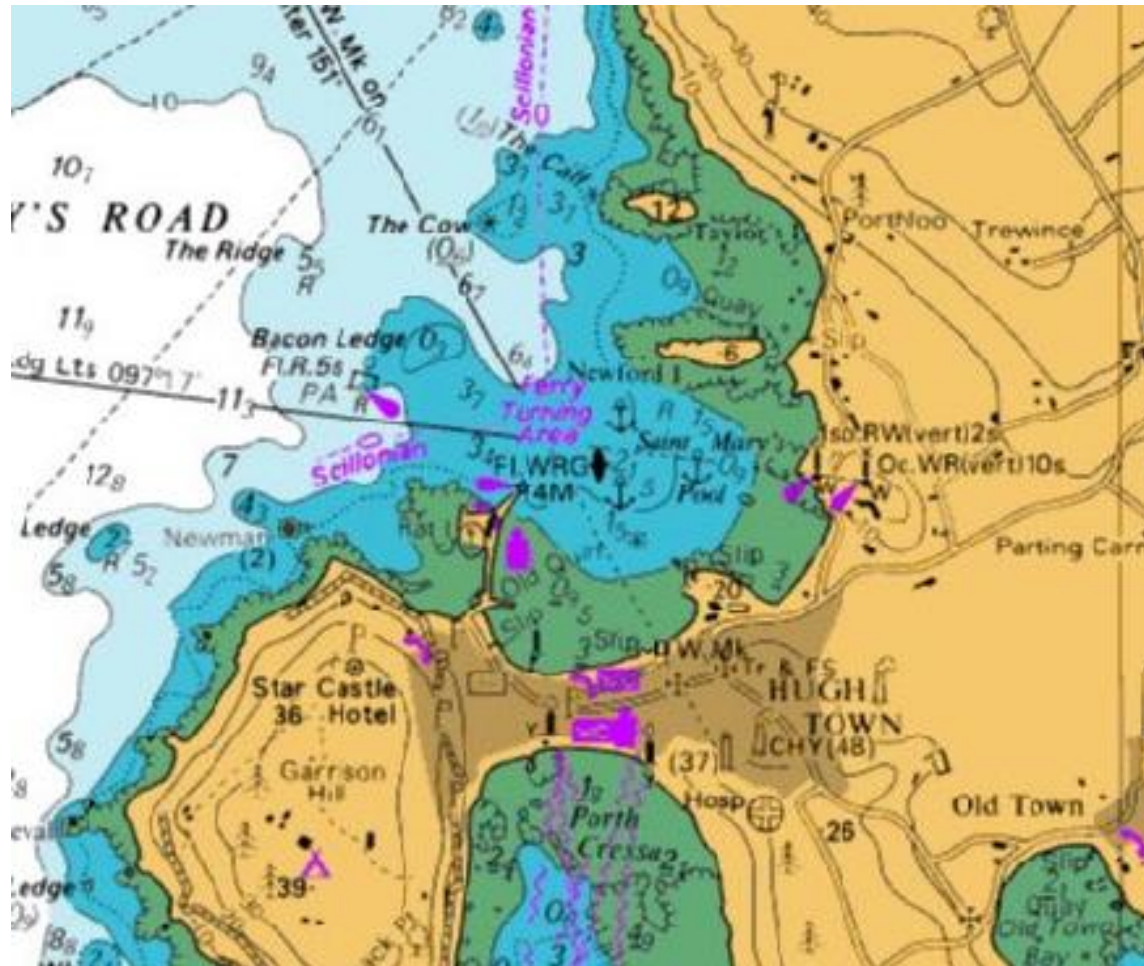
Passage Planning - Arrival - alternatives



Passage Planning - Arrival -St. Marys



Passage Planning - Arrival -St. Marys





Passage Planning - Arrival -St. Marys

Reference Websites:-

- <http://url.ie/e7j5>
- <http://url.ie/e7j6>
- <http://url.ie/e7j7>
- <http://url.ie/e7j8>



Passage Planning

- Berth to berth
- Pilotage Plans
- Dangers, Shipping lanes etc
- Fuel, Water, Gas, Provisions, Safety list
- Crew -watches, abilities etc
- Vessel identification - flags, name etc
- Certification - personal + vessel
- Prepare logbook
- Tango Romeo